

## POTA Activation Parks in the Forsyth, GA Area

**US-2185** High Falls State Park

33.1824, -84.0141 (EM73xe) (Monroe County)

Link to closest Site: [US-2185 Map](#) – 13.7 mi from Campground

[Park WebSite](#)

**US-3772** Rum Creek Wildlife Management Area

33.0303, -83.8053 (EM83ca) (Monroe County)

Link to closest Site: [US-3772 Map](#) – 7.5 mi from Campground

[Park WebSite](#)

**US-7858** Dames Ferry Campground State Park (2fer withing the US-3772)

33.0442, -83.7577 (EM83cb) (Monroe County)

Link to closest Site: [US-7858 Map](#) – 12.9 mi from Campground

[Park WebSite](#)

**US-3720** Jarrell Plantation State Historic Site (2fr within the US-3720)

33.05, -83.72 (EM83db) (Jones County)

Link to closest Site: [US-3720 Map](#) – 17 Mi from Campground

[Park WebSite](#)

**US-4649** Hitchiti State Forest

33.05, -83.7146 (EM83db) (Jones County)

Link to closest Site: [US-4649 Map](#) – 16.4 mi from Campground

[Park WebSite](#)

**US-0264** Piedmont National Wildlife Refuge

33.111, -83.679 (EM83dc) (Jones County)

Link to closest Site: [US-0264 Map](#) – 14.2 mi from Campground

[Park WebSite](#)

**US-2186** Indian Springs State Park

33.2477, -83.9205 (EM83af) (Butts County)

Link to closest Site: [US-2186 Map](#) – 16.7 mi from Campground

[Park WebSite](#)

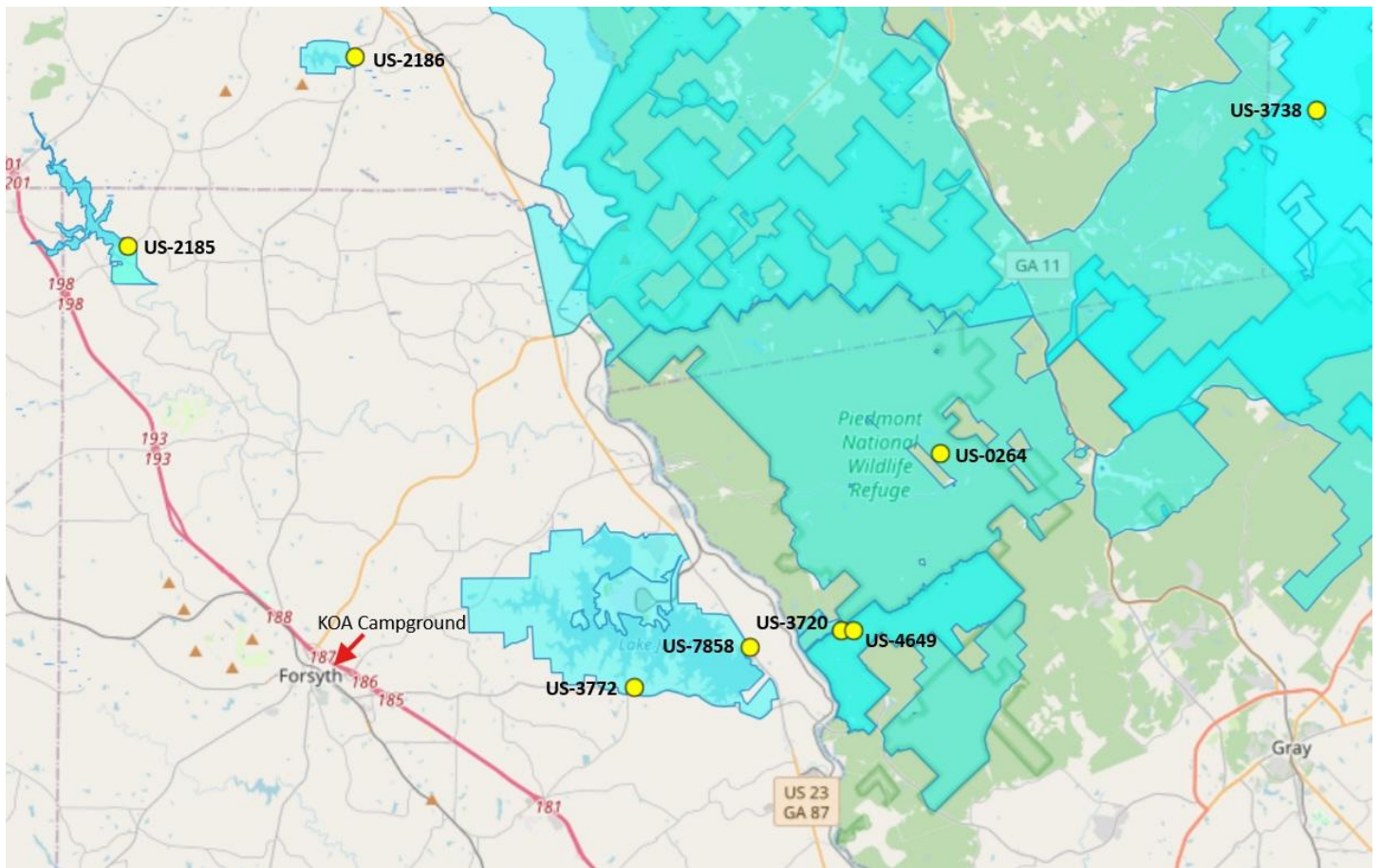
**US-3738** Cedar Creek Wildlife Management Area

33.2294, -83.5238 (EM83ff) (Putnam County)

Link to closest Site: [US-3738 Map](#) – 27 mi from Campground

[Park WebSite](#)

## MAP OF POTA SITES FOR FALL RALLY



## POTA MAP SOFTWARE

Following is a good link to a mapping application for finding new POTA locations around your location and also tracking your activations: [POTAMAP](#)